

## Stanford

Serene<sup>1</sup>



The oval is a serene common



The vegetation in Main Quad is not so wild but fascinating



The old church at Main Quad, serene for some occasions



Rural surrounding, serene for others



Are some new blocks serene?... ... is this?



<sup>1</sup> The photos spontaneously taken of eight characteristics during a 4 hours walk 4<sup>th</sup> April 2013



## Stanford

Wild/fascination



Wild is left of the Entrance



and Lush is right



A wheat river by Olmsted, and a stone river, by Andy Goldsworthy. Art can also fascinate



Modern water with climbing *Wisteria cinensis* can fascinate ... as can peaceful rural surroundings



# Stanford

Lush, species rich



Groves (skogsdungar)

Space for both routes and people



Attractive bike parking



Lush home environments



## Stanford

Space, each faculty their own block, entering their own world



Entering the historic block, a coherent whole

The Main Quad



From Main Quad, to the Technicians' block and Quad

The biochemists' backyard



Technishens' space

The biochemists' front yard



# Stanford

## The Common



The oval from a bird view



Available lawn on the way to biochemistry



Available lawn near a café



To the biochemistry, lush entrance...



The engineering



...but hard inside (Foster & Partner/MBT Architecture)



## Stanford

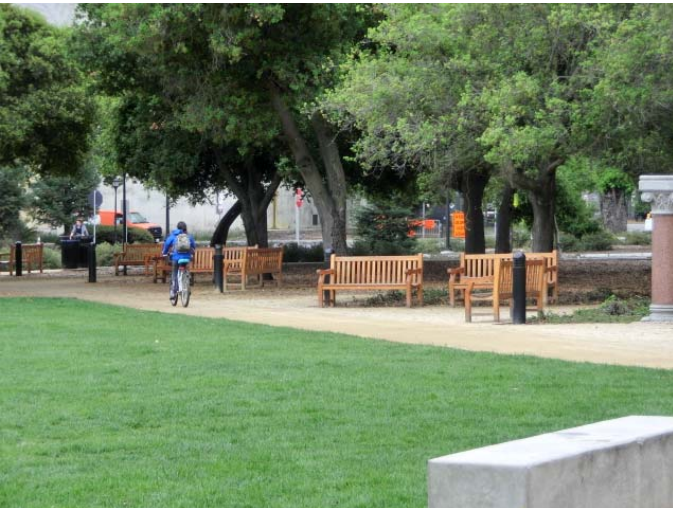
The pleasure garden



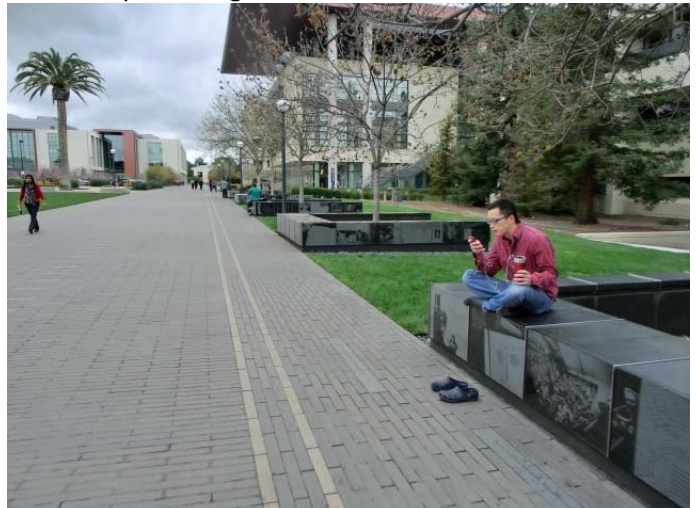
Hard café ...



A pleasure garden at students home, dorms



Refuge and prospect



A refuge(?), to prospect the analog and digital space



Not so cosy atmosphere in this sitting corner



Sport places are commons. This probably also for "fest".



## Stanford

### Center/fest



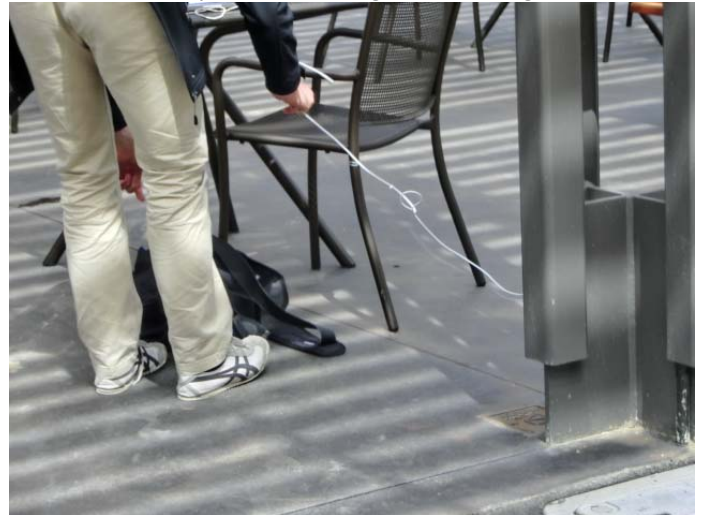
The Engineering's block, eating and meeting places



The biochemistry's block, Eating and meeting - acoustic(?)



Business School



Old computer, bad batteries



Now ready to work



Here is where people meet, The Tresidder Union for students affairs, and Faculty Club



# Stanford

## Cultural history



Olmsted's Entrance by the Oval to "The Farm". The University opened 1891



like Alhambra - a lone from Islamic history, science and for restorative minds.



## Yellow sandstone





# Stanford

## Other notes



Cykelställ väl placerade



Cykling tar över mer och mer



Watching traces of previous generations "green tech"



Some historical characteristic of the biochemical science



## Stanford



Cykelparkering i biokemikvarteret



Ventilation behind noise walls



Assessable for disabled



... and or bikers



Empty benches neck to neck